

# Mobilizing a System Response to Caregiver Support

Informal Caregiving in the Formal System: From Ideas to Solutions

Healthy Connections Conference  
June 9, 2011

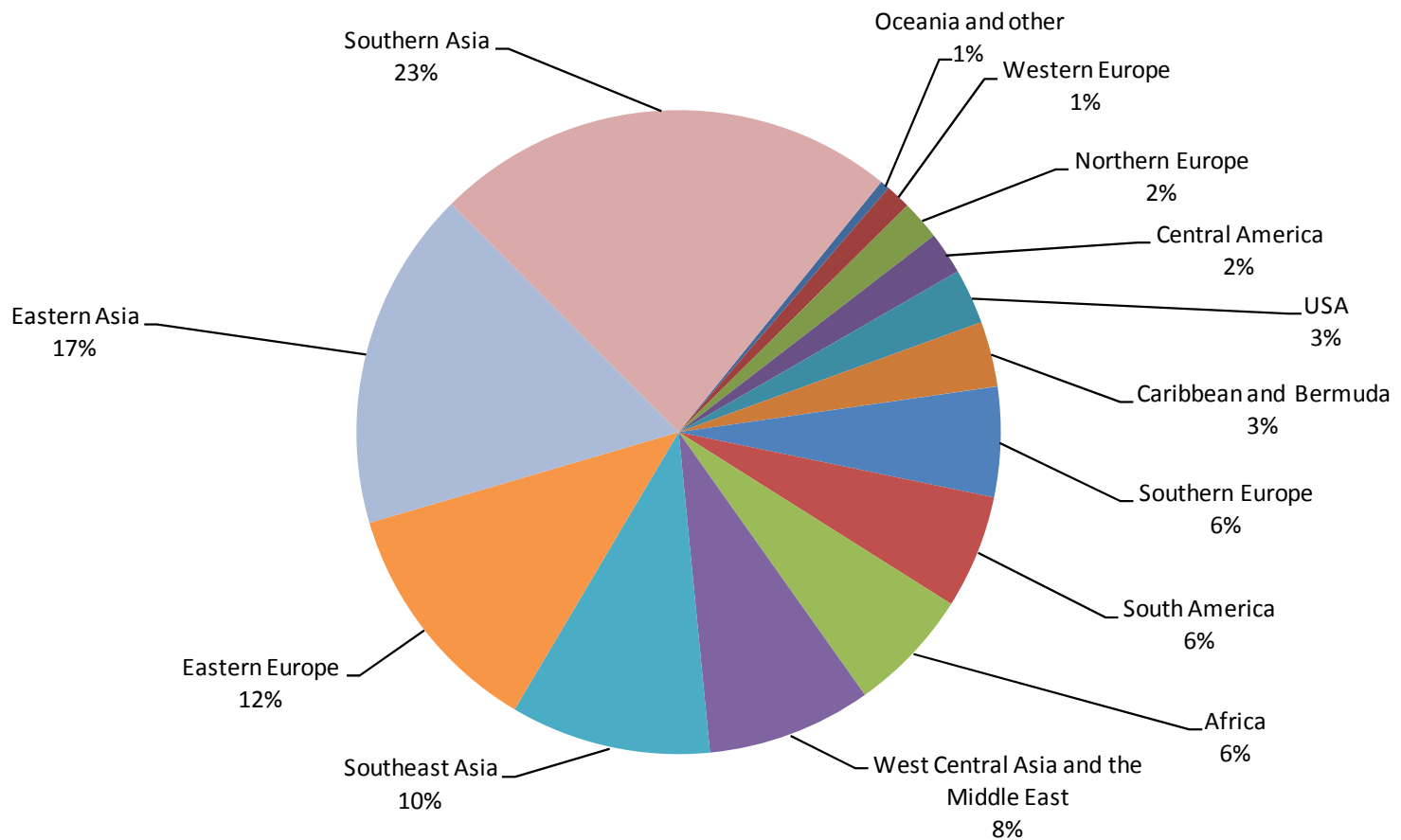
Camille Orridge  
CEO, Toronto Central LHIN

# Toronto Central LHIN: Diverse Caregiver Needs

- 41% immigrants
- 10% identifies as LGBT
- 5,000 homeless
- 19% lone parent families
  
- 13% Seniors age 65 and over
  - 34% aged 65+ living alone
  - 54% aged 65+ with a disability

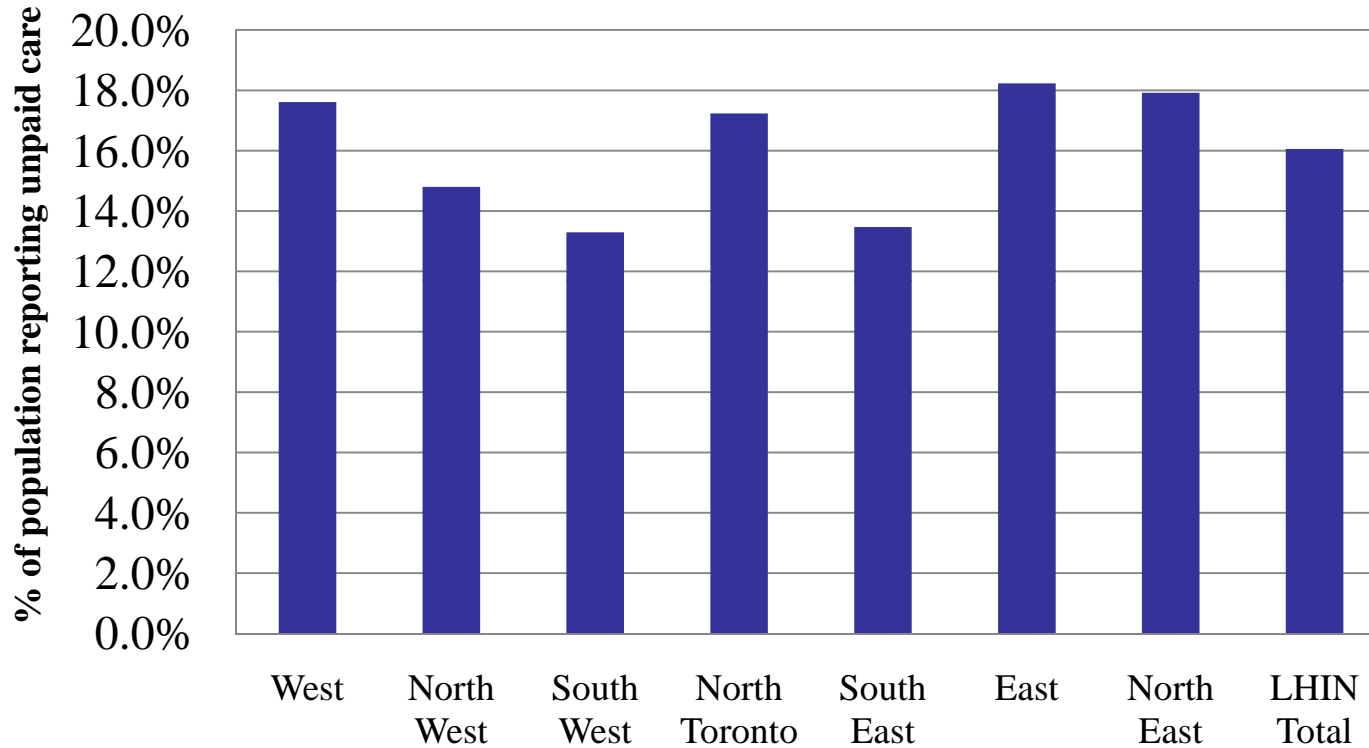


## Areas of Birth for Toronto Central LHIN Recent Immigrants (2001-2006), 2006 Census



# Informal Caregiver Support in TC LHIN

**Percent of Population Reporting Hours of Unpaid Care/Assistance to TC LHIN Seniors, by SubLHIN, 2006**



Data source: 2006 Census profiles from Health Analytics Branch, MOHLTC

# Comparison of Total Hours Spent by Informal Caregivers (Toronto Central)

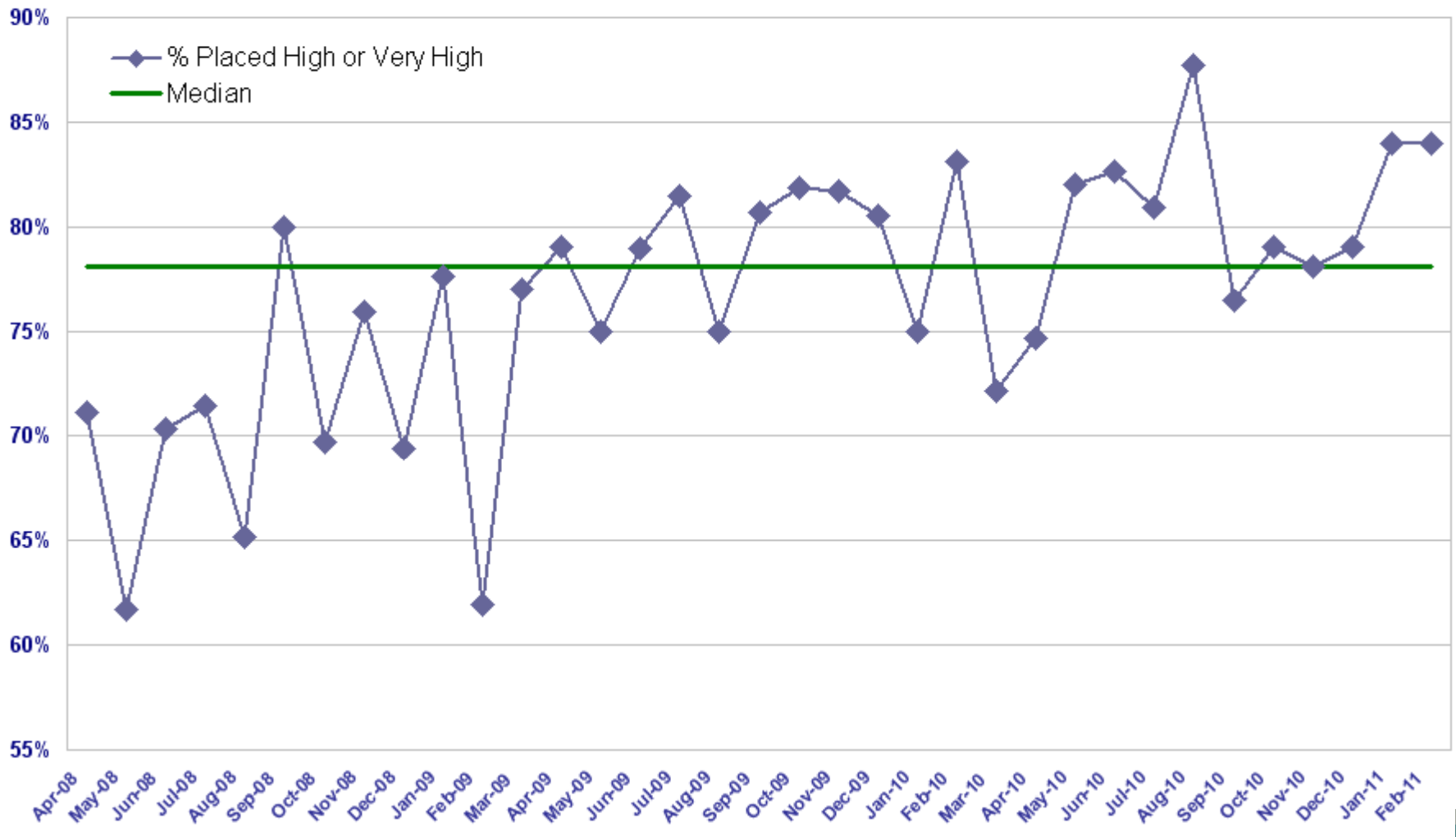
Comparison of Total Hours Spent by Informal Caregivers (Toronto Central)

Type of Informal Caregiver	Mean Hours Per Week	Number of Cases (%)
Spouse	18.9	1648 (23%)
Adult Child	17.7	3809 (52%)
Other Relative	17.5	1120 (15%)
Friend/Neighbour	6.2	715 (10%)

Not Statistically Significant  
Total Missing Cases = 1116

Chart taken from: Balance of Care Research Group report "*Formal and Informal Care for Older Persons: Assessing Balance in Ontario*"  
A.Paul Williams, Alice Peckham, Kerry Kuluski, Robin Montgomery, Frances Morton and Jillian Watkins (March 2010)

**Clients Placed in LTCHs with Scores of High or Very High as a Proportion of Total Clients Placed in LTCH in the Time Period**  
**April 2008 - February 2011**



# Delivering High Quality Care for All



# Caregiving in High-Density Neighbourhoods



200 Wellesley Street – Fire (August 2010)

**Over 25 years, the number of poor families living in high-rise apartments has increased from 34% (1981) to 43% (2006)**

- *Poverty by Postal Code 2: Vertical Poverty, United Way Toronto (Jan 2011)*

## *NORC Supportive Service Program (SSP) Models*

*The high density of seniors in some New York City high-rises has produced an alternative form of senior housing. The term “NORC,” short for naturally occurring retirement community, describes a geographic area with a significant proportion of seniors living in housing that was not designed or planned with seniors in mind.*

# Caregiving in the LGBT Community



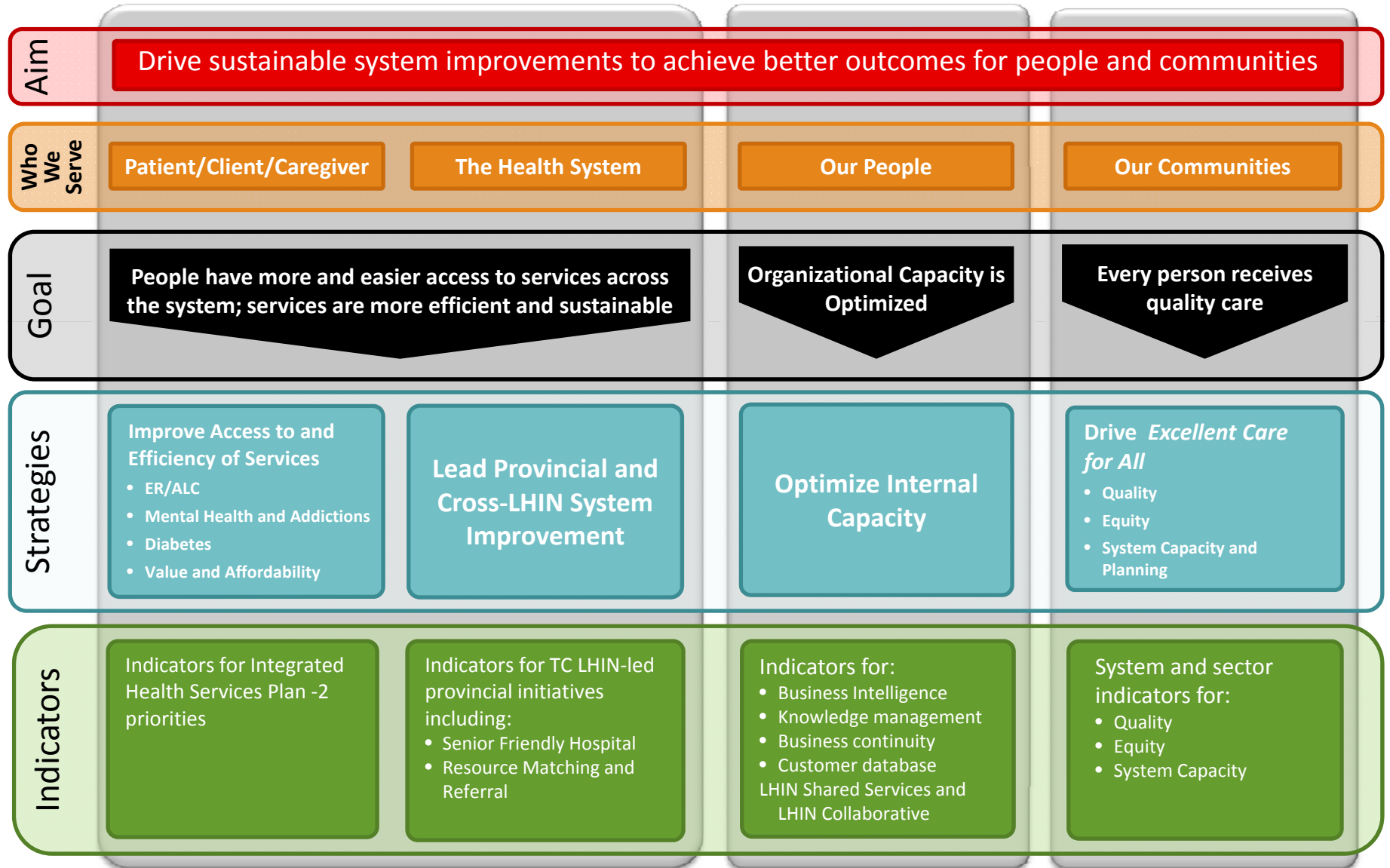
The Health and Social Service  
Needs of Gay and Lesbian  
Elders and Their Families in  
Canada

Shari Brotman and Robert  
Cormier (2003)

“Having faced rejection from  
biological family, gay and  
lesbian people have often had to  
seek out friends with whom  
they can be themselves, be out,  
and be affirmed. These friends  
become family, or “fictive kin”  
(Barranti & Cohen, 2000).”

# Going Forward: *Excellent Care for All*

TC LHIN Strategy 2011/12 - 2013/14



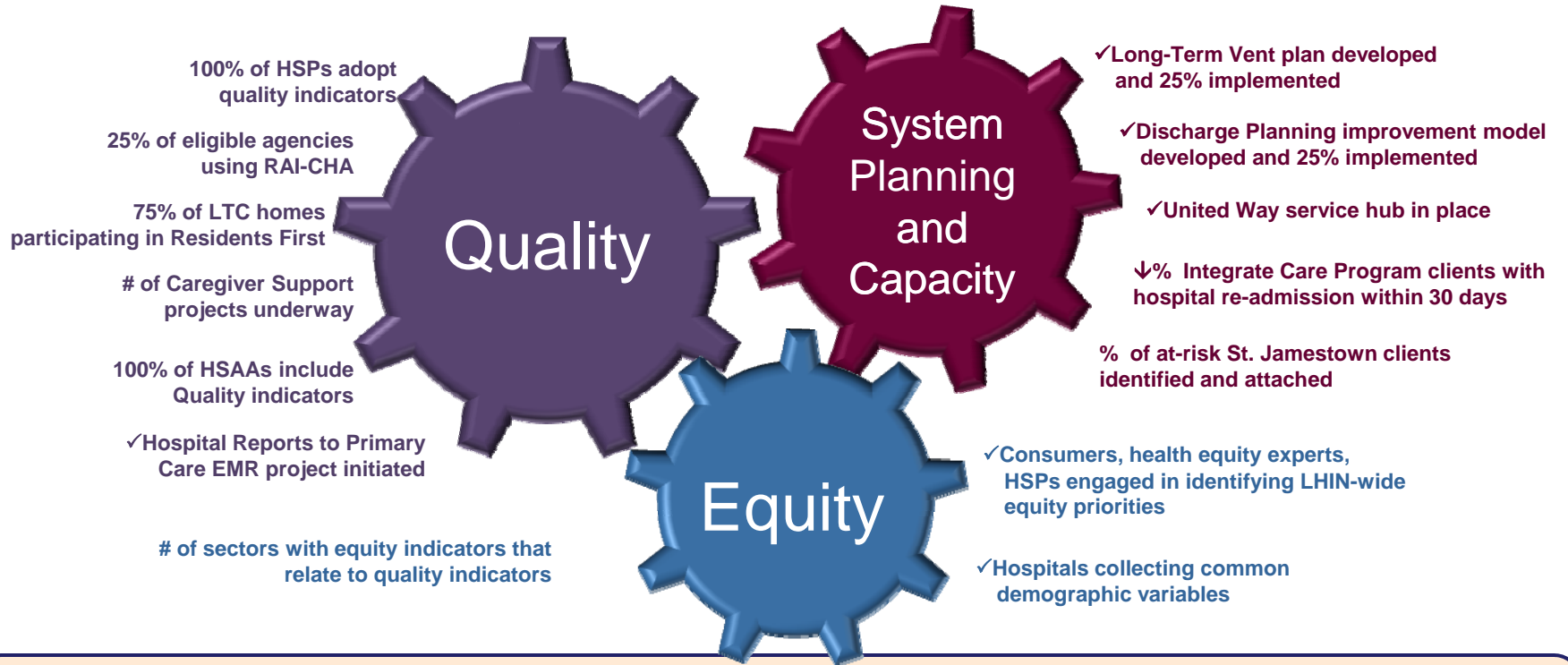
Aim

Drive sustainable system improvements to achieve better outcomes for people and communities

Goal

Every person receives quality care: Drive Excellent Care for all

Indicators



Key Activities & Deliverables

Our Communities

**Quality**

- Set of TC LHIN quality indicators established
- Sector-specific quality indicators endorsed by sectors, included in LHIN scorecard
- Resident First Quality Improvement Initiative in LTC homes
- Phase I RAI-CHA (common assessment form) implemented in eligible CSS agencies
- Caregiver Support projects underway
- CCAC Enhanced Role implementation

**Equity**

- Establish set of TC LHIN equity indicators that relate to Quality indicators
- Sector-specific equity indicators endorsed by sectors, included in LHIN scorecard
- Begin to implement focused set of LHIN-wide health equity initiatives
- Begin process of collecting common demographic data, beginning with hospitals

**System Planning and Capacity**

- Long Term Ventilation needs planning
- Discharge planning improvement model
- Role & criteria of rehab & CCC in TC LHIN defined
- Integrated Care for Complex Patients projects
- Integrated Care Model in North St. Jamestown
- United Way to service hub in high-needs areas
- Coordinated access to targeted MHA services

Developing the health care  
system around  
***people and communities***

